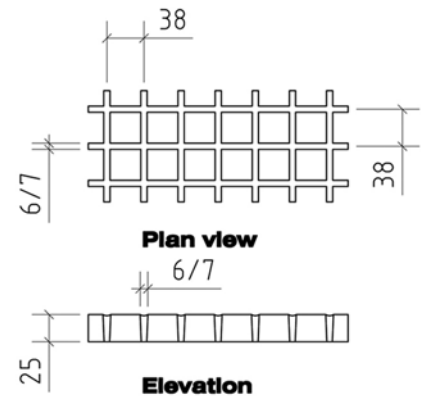
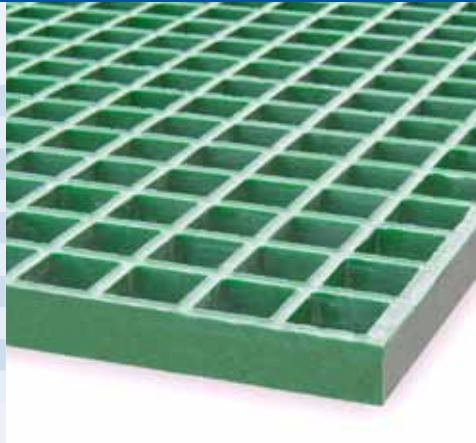


Supplies a wide range of Fibreglass Reinforced Plastic grating and stairtreads. The grating is available in various panel sizes and thicknesses. In this datasheet you will find the main product properties of the grating:

## Type: R-22010-MRI3

### Product specifications:

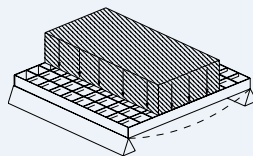
Product code:	R-22010-MRI3
Panel size:	2000 x 1000 mm
Mesh size:	38 x 38 mm
Thickness:	25 mm
Resin type:	Isophthalic polyester
Top surface:	Meniscus Top
Colour:	Green, approximately RAL 6010
Weight grating panel:	24,4 kg
Surface area panel:	2,0 m <sup>2</sup>
Weight:	12,2 kg/m <sup>2</sup>



Grating of this thickness is also standard available in 3660 x 1220 mm. Furthermore, various panel sizes are available in thicknesses 13, 30, 38 and 50 mm. Also available in the colours grey and yellow.

### Strength of FRP grating: uniform loaded

Grating thickness 25 mm  
Meshes 38 x 38 mm



Net span in mm	Evenly distributed load in KN/m <sup>2</sup>			Maximum recommended in KN/m <sup>2</sup>	Failure load in KN/m <sup>2</sup>
	2,5	5	10		
400	< 1	< 1	< 1	45	197
500	< 1	< 1	1	28	127
600	2	3	6	20	88
700	3	6	9	14	65
800	4	-	-	11	50
900	8	-	-	9	40
1000	12	-	-	7	32
1100	-	-	-	6	27
	Deflection in mm				

[www.flexxcon.com](http://www.flexxcon.com)

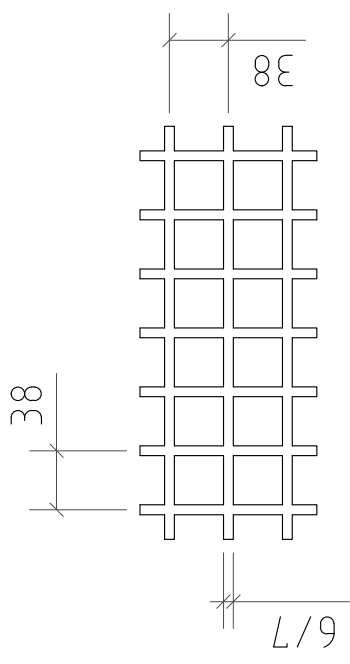
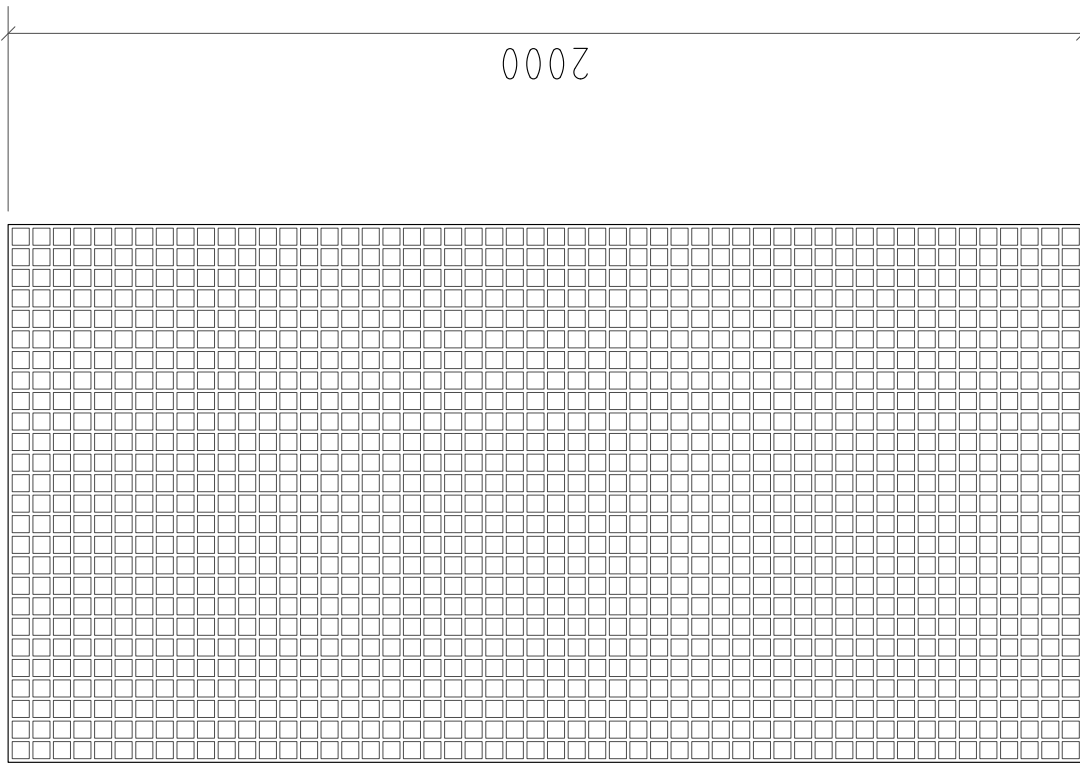
### Chemical resistance list

Chemical environment	Concentration %	Temp in °C	ISO
Acetic acid	50	max	C
Alcohols	100	49	I
Ammonium salts-neutral	all	49	C
Ammonium salts-agressive	all	24	I
Chlorine dioxide	saturated	60	N
Chlorine water	saturated	49	I
Citric acid	all	max	C
Crude oil	all	max	C
Ferric chloride	100	max	C
Ferric salts	all	max	C
Fuel (diesel, jet, gasoline)	all	38	C
Hydrochlorid acid	10	max	S
Hydrochlorid acid	30	max	S
Hydrochlorid acid (concentrated)	all	≤83	N
Hydrofluoric acid	20	24	N
Hydrogen peroxide	30	24	N
Lactic acid	100	max	C
Nitric acid	20	49	S
Ozone for sewage treatment		38	C
Phosphoric acid	85	max	C
Phosphoric acid, super	115	max	I
Potassium salts	all	max	C
Sodium hydroxide	50	max	I
Sodium hydroxide	10	max	N
Sodium hypochlorite (stable)	10	38	S
Sodium salt neutral	all	max	C
Sodium sal aggressive	all	24	I
Sulfuric acid	50	max	S
Sulfuric acid	75	38	I
Water (fresh, salt, moderate)	100	max	C

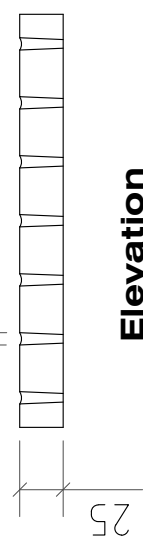
C = Continuous exposure of the grating to the chemical environment at the specified maximum temperature.  
S = Frequent exposure of the grating to splashing and spillage of the chemical environment and temperature as stated in the list.

I = Infrequent exposure of the grating to splashing and spillage of the chemical environment and temperature as stated in the list, and the substances removed from/washed off the grating straight away.

N = Not recommended in the concentrations and temperatures as stated in the list.



**Plan view**



**Elevation**

Grating size:	2000x1000	Productnumber:	R-22010-MR13
Grating height:	25	Drawer:	WM
Square Mesh:	38x38	Date:	
Weight / m <sup>2</sup> :	12,2 kg	Schale:	
Weight per plate:	24,4 kg		

P.O. Box 1761  
 3800 BT Amersfoort  
 The Netherlands  
 Tel: 0031 (0)33-4556696  
 Fax: 0031 (0)33-4553295

Workshop / Warehouse:  
 Parallelweg 74  
 7161 AG Neede  
 The Netherlands

**Plan view grating**